



Technologies & Solutions

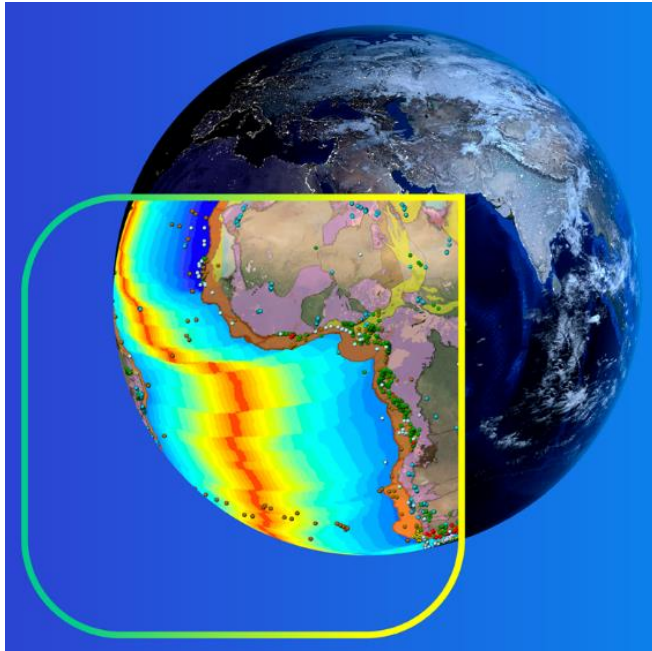
Providing unique perspectives on our planet

March 2024

cgg.com



A global technology and HPC leader



SEE THINGS DIFFERENTLY

Providing a comprehensive range of data, products, services and solutions for complex digital, energy transition, natural resource, environmental and infrastructure challenges



INNOVATION



PEOPLE



QUALITY



SOCIAL
RESPONSIBILITY



HSE
EXCELLENCE

Our values



We are problem solvers

Curious and passionate about constantly advancing science and technology to discover new insights, innovations and solutions for all our stakeholders



We are open

Always inclusive and believing good ideas can come from anyone, anywhere



We are responsible

Caring deeply about the Earth and doing the right thing, always acting safely and with integrity



We are driven to go beyond expectations

Continuously delivering outstanding service for our clients





Our ESG commitments

OUR SUSTAINABILITY CONTRIBUTION

Reducing energy companies' CO₂ footprint: more accurate drilling locations to avoid hazards and optimally target reservoirs

Improving energy companies' internal efficiency: expertise & HPC resources & digital platform to optimize decision process

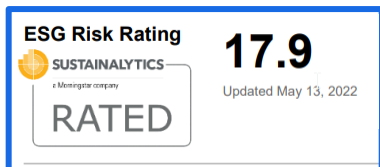
Energy transition: supporting the transition to a lower carbon future

Environmental science: improving awareness of local and global environmental changes

OUR ESG RATINGS



#1-3 in Oilfield Services



#2 in Energy Services



OUR CARBON NEUTRALITY STATEMENT



CGG will achieve net zero by 2050

Aligned with our longstanding commitment to act responsibly and minimize the impact of our activities on the environment, in every sector of our business, we pledge to reach net zero emissions by 2050 in scopes 1 & 2 of the greenhouse gas (GHG) protocol

GHG emissions Scope 1+2 (K tons CO ₂ eq)	2021: 45 Kt 2022: 41 Kt 2023: 24 Kt	50% reduction by 2030 90% by 2050
% Low emissions energy mix (total kwh consumption Scope 2)	2021: 36% 2022: 51% 2023: 65%	50% in 2030 90% in 2050 <i>or sooner depending on availability and prices</i>
Power usage efficiency (3 main centers)	2021: 1.35 2022: 1.42 2023: 1.35	<= 1.2 by 2030



Our leadership



Sophie Zurquiyah
CEO



Peter Whiting
EVP Geoscience



Dechun Lin
EVP Earth Data



Agnès Boudot
EVP HPC and Cloud
Solutions



Jérôme Denigot
EVP Sensing &
Monitoring
and EVP Group HR



Jérôme Serve
Chief Financial Officer



Eduardo Coutinho
EVP Group General
Counsel



Hovey Cox
EVP Marketing &
Sales and
Communications



Emmanuel Odin
Chief Sustainability Officer



Financial overview: 2023 full year



Revenue
\$1,125 m
up 21%* Y-o-Y

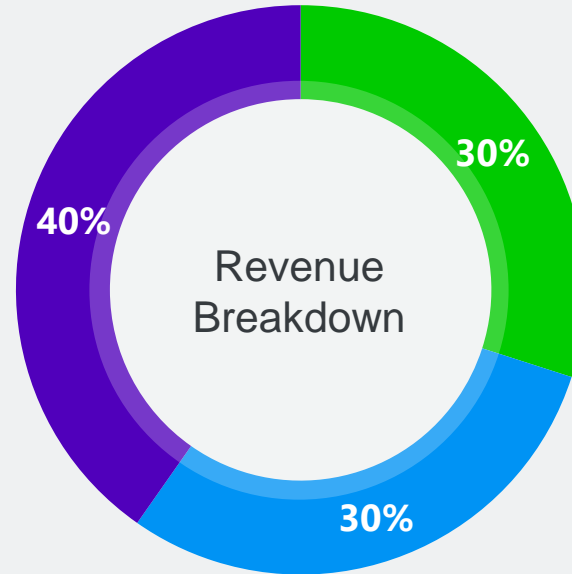


Adjusted
EBITDAs
\$400* m
a 36% margin



Liquidity
\$417 m

Sensing &
Monitoring
\$453 m

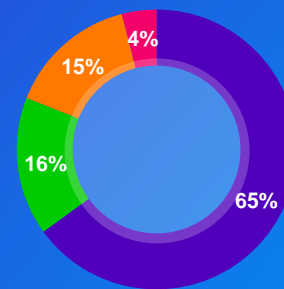


Earth Data
\$337 m

Geoscience
\$335 m

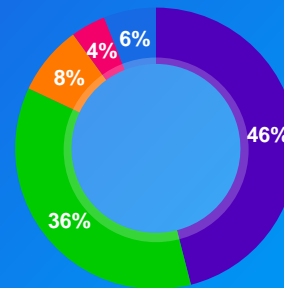


Global services & expertize



Staff allocation by activity

- Operations
- Support
- R&D
- Sales



Staff allocation by Division

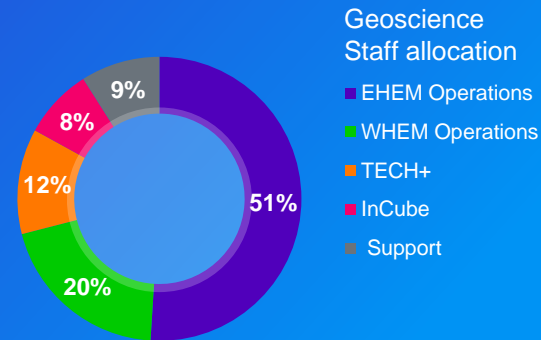
- Sensing & Mon.
- Geoscience
- HPC & Cloud
- Earth Data
- Support

Geoscience

25 Locations Globally
70% post graduate degrees
27% PhDs



Geoscience global footprint



Geoscience

25 Locations Globally

- 16 Subsurface Imaging open centres
- 7 Subsurface Imaging dedicated centres

Technical Staff

- 70% Post graduate degrees
- 27% PhD



A wider scope of business offerings

CORE BUSINESSES



Geoscience

Established leader in subsurface imaging, geology and geoscience services.



Earth Data

The industry's most technically advanced seismic data and geologic studies in the world's key locations.



Sensing & Monitoring

Established leader in marine, land, ocean floor and downhole seismic equipment and gauges.

NEW BUSINESSES



Low Carbon

Supporting industry transition with technology, data and expertise for CCUS, geothermal and critical minerals.



HPC & Digital Solutions

Data transformation, data science, AI, machine learning, HPC expertise & CGG Cloud services.



Infrastructure Monitoring

Structural health and earthworks monitoring solutions with advanced sensors.



Geoscience Ecosystem



Subsurface Imaging

Unmatched expertise, advanced geoscience & digital algorithms and excellent service in every image



Geology

Leading geological and reservoir services for natural resource development



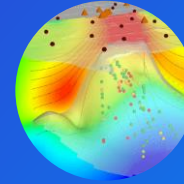
Low Carbon

Applying our geoscience and digital expertise to geothermal, CCUS, critical mineral and environmental analysis and monitoring



Data Transformation

Maximizing the value of data to improve business decisions with expert **Data Hub** transformation services and technology



Multiphysics

Expert analysis and interpretation of multi-domain geophysical data for natural resources and environmental applications



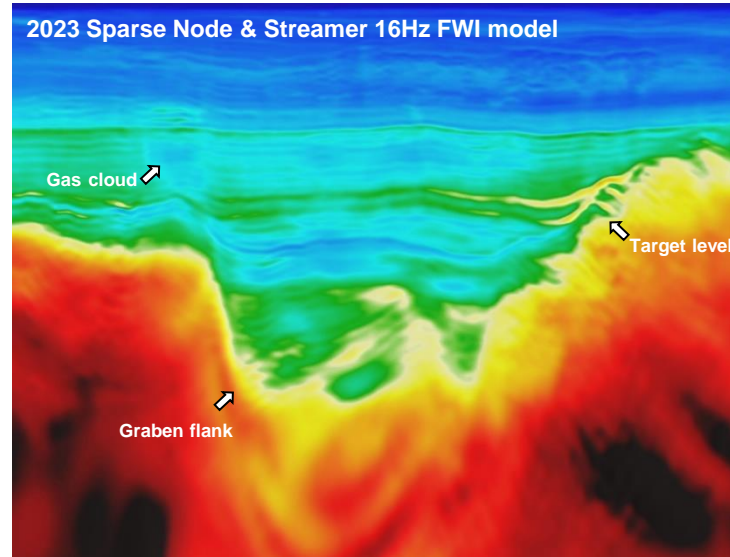
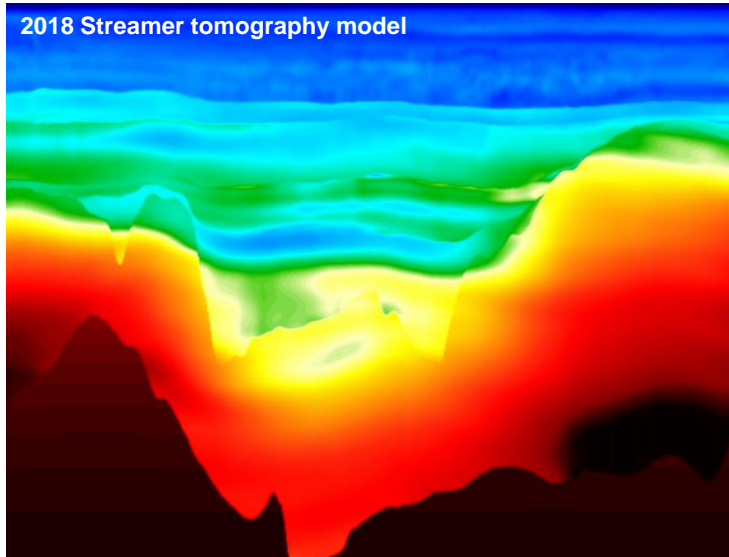
Earth Observation

Satellite Mapping intelligence from imagery for energy, mining, engineering and environment

Advanced imaging technology for reservoir insight

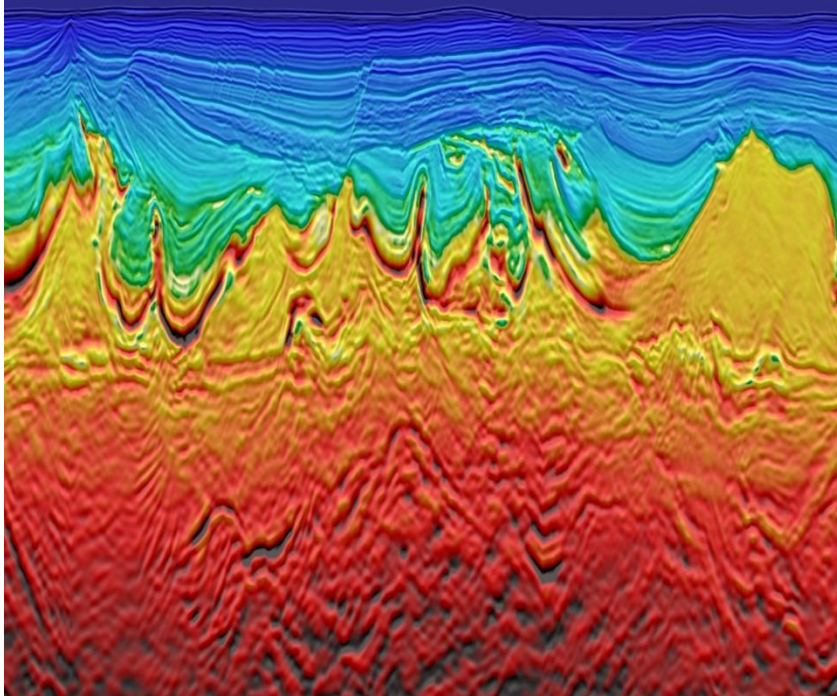
Driving advances in imaging technology to increase exploration success and reduce drilling risks

- Elastic time-lag FWI and FWI Imaging providing unparalleled results in a range of geological settings
- OBN and hybrid OBN-streamer imaging leadership for the most complex targets



Joint velocity model building with simultaneously acquired sparse node and streamer data, North Viking Graben. CGG Earth Data.

Earth Data



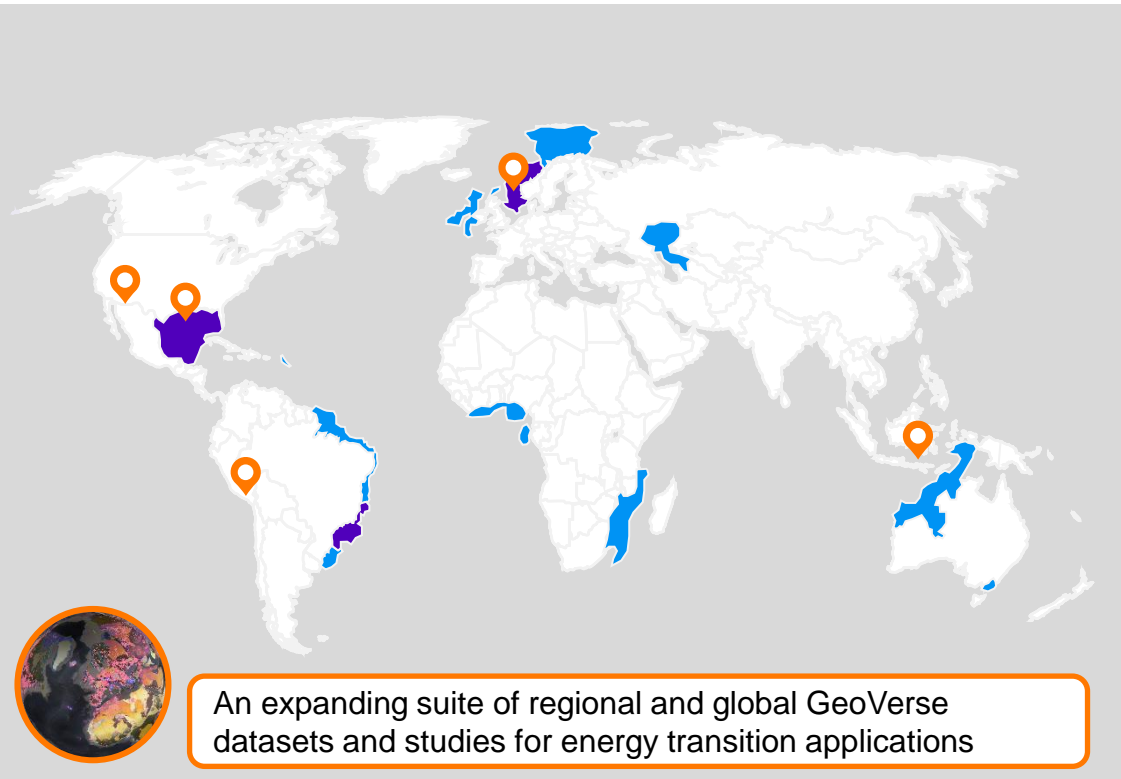
Seismic data reimaged using 30 Hz elastic time-lag full waveform inversion (E-TLFWI), Santos Basin, Brazil. CGG Earth Data.

The most recent and advanced data in the world's key basins and frontiers

- The highest quality seismic data library
- GeoVerse analytics-ready Earth data
- Versal unified seismic data ecosystem

➤ **The right data, in the right
place at the right time**

An evolving Earth Data library



Core Basins

- Gulf of Mexico, Brazil pre-salt, North Sea
- High-end 3D seismic, OBN and reimagining for near-field exploration, reservoir development and production



Developing

- Southeast Asia, Africa, Equatorial South America and Northwest Europe
- 3D seismic and integrated geoscience studies



Energy Transition & Mining Studies

- CO₂ storage studies, SE Asia, GoM and North Sea
- Southeast Arizona mineral exploration integrated database
- Paleo-salar Lithium study, South America
- Global geothermal resource assessments

Earth Data Library: Supporting industry transition

Applying our expertise to a develop new multi-client products for the energy transition

■ Carbon storage

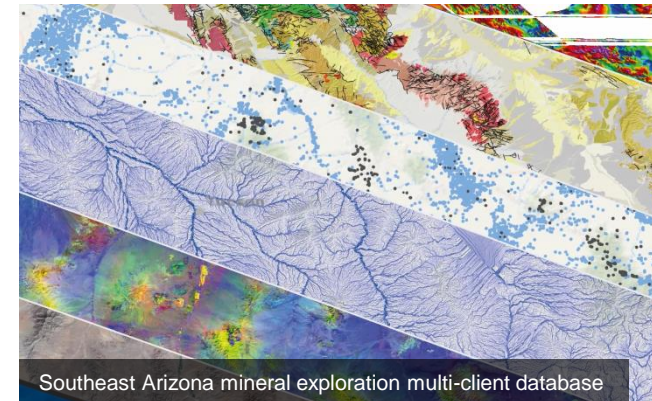
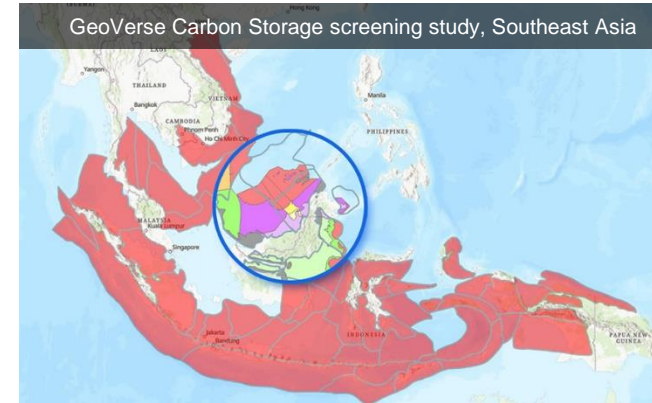
- Applying a unique play-scale screening methodology to identify and de-risk carbon storage potential in the Gulf of Mexico, North Sea and Southeast Asia

■ Mineral exploration data

- New multi-client project in SE Arizona to support the mining industry with an integrated ready-to-use, expertly curated dataset

■ Lithium studies

- Global Li brine screening study leveraging geochemical data
- Paleo-salar Li study for South America combining satellite and topographic modelling and ground truthing



Digital solutions enrich Earth Data offering

Versal



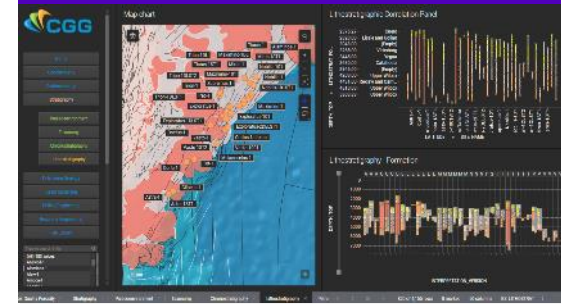
Unified seismic data ecosystem
offering the vast majority of the
world's multi-client seismic data
CGG | TGS | PGS | SLB

GeoVerse



A global integrated geological
database ready for licensing

GeoWells

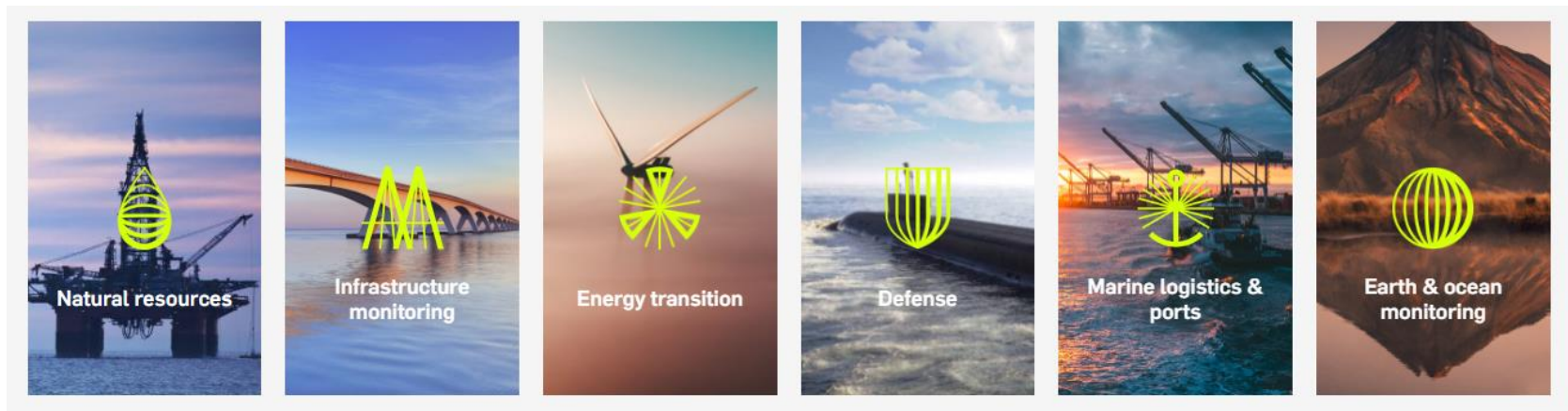


Advanced multi-discipline well
data available in GOM (Mexico),
Brazil pre-salt basins and Norway



**BUILDING AN ECOSYSTEM AND GLOBAL DIGITAL DATABASE
FOR A NEW GENERATION OF MULTI-CLIENT PRODUCTS AND SERVICES**

Sensing & Monitoring: Our Sercel offerings



Sercel is the world's leading designer and manufacturer of high-tech solutions for subsurface exploration.

From Earth and infrastructure monitoring, to energy transition, defense, oil and gas, it's in our DNA to adapt to any environment while providing insightful solutions.

> THE FUTURE IN FOCUS

Sensing & Monitoring operational highlights



Land & Marine

- Large deliveries of Nomad90 vibrators and 508XT systems to North Africa and the Middle East
- Announcement of a full range of OBN nodes from shallow water up to 6000 m depth
- Large deliveries of GPR300 Ocean Bottom Nodes (OBN)
- TPS environmentally-friendly broadband source solution deployed in the Gulf of Mexico and Southeast Asia
- Launch of MetaBlue, a Data-driven Marine Seismic Survey Management Solution



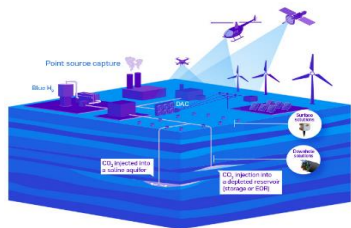
New businesses

- Sales of S-scan geotechnical monitoring solution for railway and mining applications in the US, Middle East and Africa

Developing unique offerings to address the critical needs of growing markets

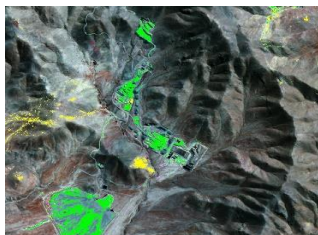


Carbon Storage & Monitoring



Low Carbon

Minerals & Mining



HPC & Data Transformation



Digital

Structural Health & Earth Works monitoring



Infrastructure

CGG strongly positioned to address critical needs

- Earth intelligence & precise subsurface images
- Data Integration, analytics, ML, AI, LLMs, AI generated insights
- Tailored HPC & digital transformation solutions
- Accurate, reliable & connected IOT sensing & monitoring solutions



New business key achievements



Digital

- Opening of a new UK HPC center, taking our global compute to **500 PFLOPS**
- Launch of innovative Outcome-as-a-Service HPC offering
- HPC contracts in the fields of Generative AI and biotechnology drug design
- Data transformation pilots and full-scale projects with Energy majors

\$90m

Revenue from
new businesses
in 2023



Low Carbon

- Carbon storage projects from prospect characterization to planning for monitoring
- Integrated CCUS data packages in North Sea, US GoM and SE Asia
- First multi-client mining industry project in North America
- Award of contract to evaluate the regional prospectivity of Mongolia for critical minerals



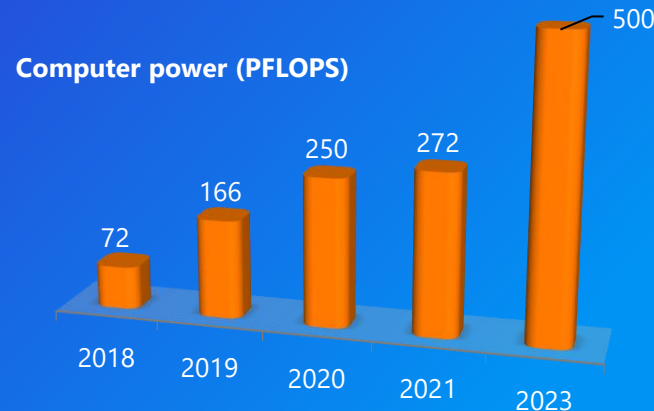
Infrastructure Monitoring

- 3 monitoring projects in France, including a stadium
- Monitoring pilot of a cable-stayed bridge in Houston with Texas DOT
- S-scan earthworks railway monitoring contract in the Middle East



HPC and Cloud Solutions

- Providing access to highly-optimized HPC resources and digital platform, and consulting services
- Opening of new UK HPC Hub, taking global compute to 500 PFLOPS
- New Outcome-as-a-Service offering:
 - Delivering customized, capability-focused HPC and AI solutions for scientific and engineering domains
 - Production-based financial model aligned with client's business objectives





Data Hub expert data transformation services and technology



Team

Subject matter experts
Data scientists and engineers
Machine learning engineers
System developers and
Cloud architects



Technology

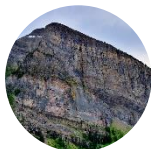
Dynamic pipeline of data transformation
and latest-generation
Machine Learning technologies
(driven by HPC and Cloud)
OSDU roadmap



Taxonomy

> 50 years of subsurface knowledge
>700 distinct data types
Millions of processed files
250,000 entities of
subsurface terminology

Digitalization services



Geoscience



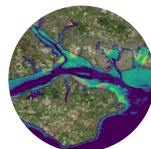
Engineering



Mining



Geothermal



Environmental



CCUS

DaaS products built by Data Hub



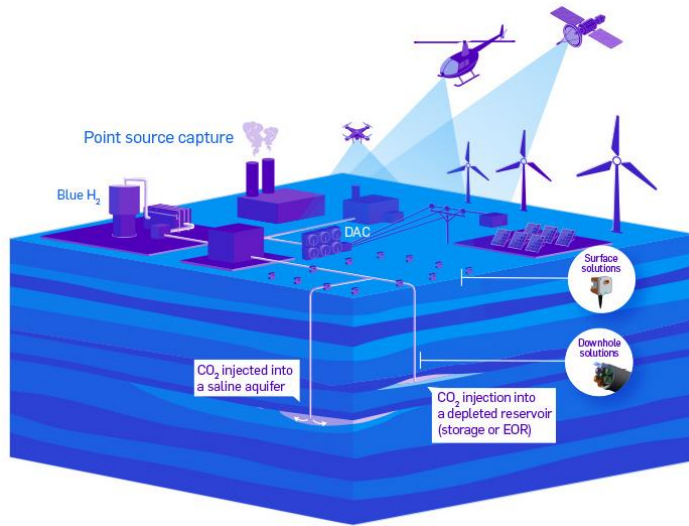
GeoVerse
global geology
& geoscience



GeoWells
regional data

Carbon Storage and Monitoring

Expertise spanning the Carbon Storage project lifecycle including participation in landmark CCS projects around the world such as Sleipner, In Salah and Gorgon. Leveraging experience across our different disciplines to provide solutions for:



- **Data** – transformation of legacy formats into analytics-ready data
- **Screening** – identification of CO₂ sites for safe, long-term subsurface storage
- **Imaging** – best-in-class seismic imaging for increased subsurface understanding
- **Planning** – diverse geological modeling for optimal seismic acquisition, storage and monitoring strategies
- **Monitoring** – tailored, cost-effective monitoring for increased site safety

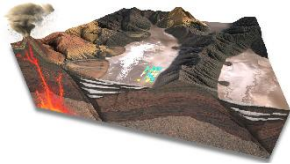
➤ 15 years of delivering impactful results in Carbon Storage

Minerals & Mining

Search & Visualize

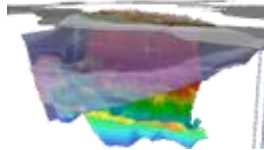
Mineral Exploration Screening

Data-driven regional screening solution for brine, salt and placer hosted minerals essential for the energy transition



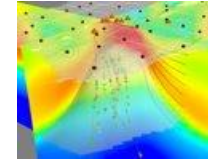
Deep Mineral Exploration

Improving deep mineral play imaging efficiency through best-in-class technology applications



Integrated Mine Imaging

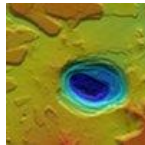
Cross-disciplinary production mapping and modeling ready for advanced analytics and modeling



Measure & Monitor

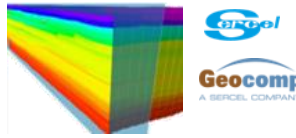
MineScope

Remote, satellite-derived intelligence across mine sites to aid decision-making throughout the mining life cycle



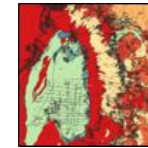
S-Scan for Mining

Complete geophysical solution for monitoring changes in surface and underground structures to anticipate deformation and collapse



RESSolution

Remote environmental & social baseline and monitoring systems driving the responsible management of Natural Capital



> Leveraging expertise across Equipment, Earth Data and Geoscience

Structural health monitoring: Successful bridge test in the US



Market

- Structural health monitoring market estimated ~2B\$
- Leveraging high-quality wireless sensors and imaging expertise to deliver solutions for critical infrastructures

Cable-stayed bridge test in Southern US

- Instrumented cable-stayed bridge with S-Lynks sensor solution for a major infrastructure operator
- System measured vibration modes and cables tension, and will allow more relevant and targeted maintenance



THANK YOU