

Unlock the depths of the Tano Basin with CGG's high-quality 3D broadband seismic

CGG Earth Data in association with DGH and PETROCI is offering fast-track results of the ongoing 3D reprocessing project offshore Côte d'Ivoire.

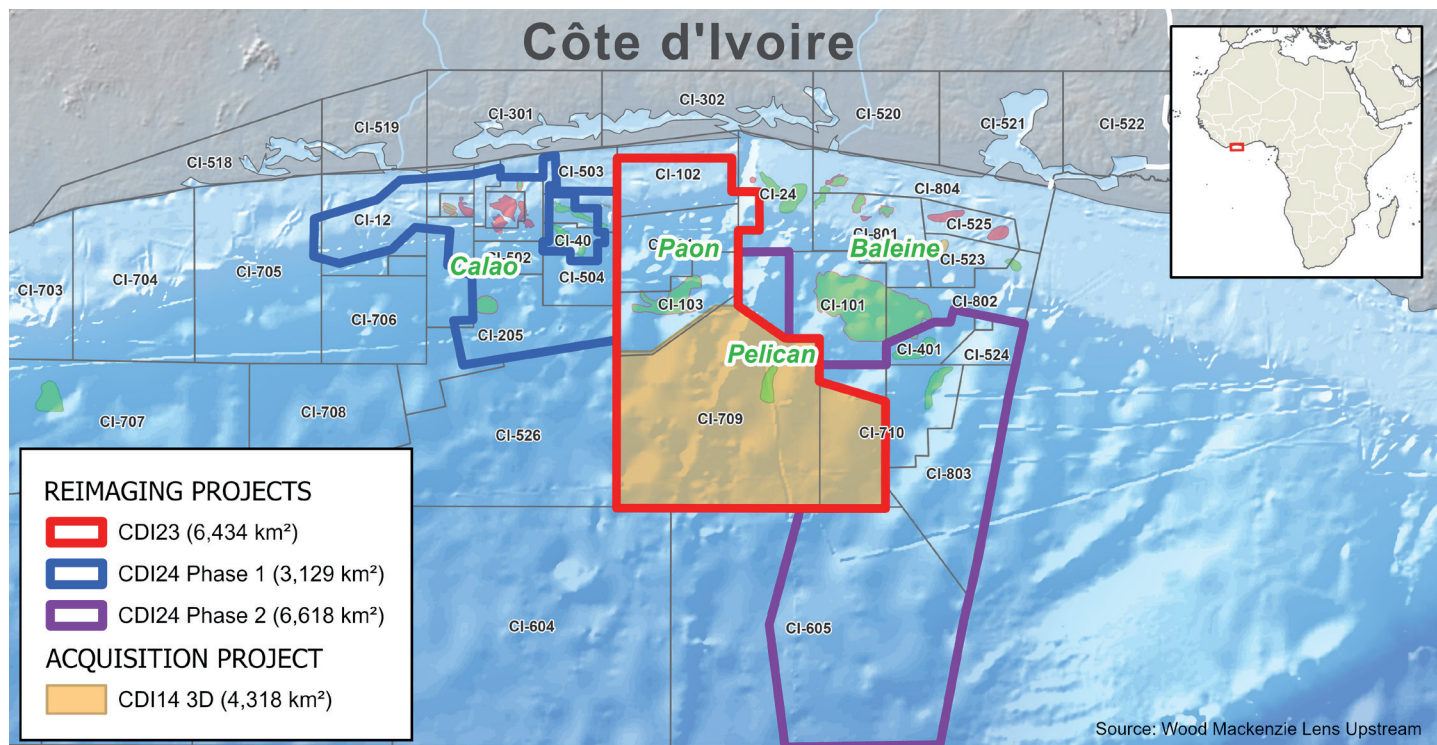
Côte d'Ivoire (CDI) is becoming a hotspot for oil and gas exploration. Recent discoveries, favourable geological conditions, and government support make it an attractive destination for energy companies. The ongoing exploration efforts point to a promising future for hydrocarbon development in the country. CGG's advanced 3D seismic dataset is your gateway to revealing the full potential of the Ivorian margin.

Highlights

- 6,434 km² of cutting-edge PSDM 3D multi-client data re-imaged in 2024
- CGG survey is located in an underexplored area just between the Baleine Field and the most recent Calao discovery and covers both the Paon and Pelican fields
- Fast track results are ready for delivery; final processing results to be ready in December

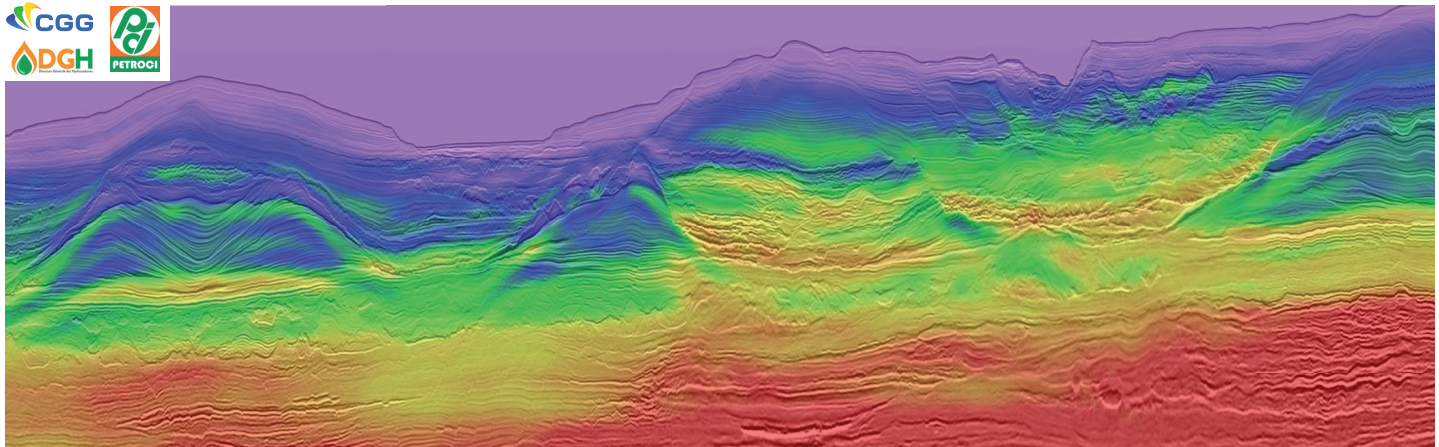
New and enhanced seismic data

Building on the early success of our current reprocessing project, CGG is excited to announce the kick-off of PSDM reprocessing with CDI24 Phase 1 already started, supported by industry backing. CDI24 Phase 2 is planned to commence in the coming months, underscoring our commitment to continuous exploration and innovation in unlocking the full potential of the region's resources.



Project	Area	Start	Fast Track	Completion
CDI14	4,318 km ²	2014	-	2014
CDI 2023/2024	6,434 km ²	2023	March 2024	Q4 2024
CDI24 Phase 1	3,129 km ²	March 2024	Q3-4 2024	Q1 2025
CDI24 Phase 2	6,618 km ²	Anticipated in H2 2024	-	-

CÔTE D'IVOIRE

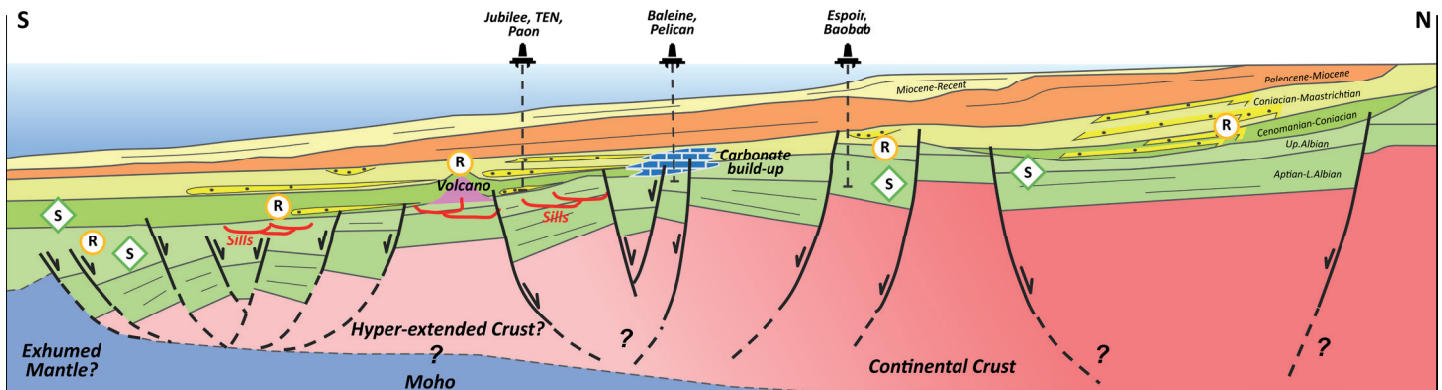


Fast-track results overlaid by velocities.

The possibility of an acquisition project further offshore is currently being explored, leveraging geological findings and comprehensive analysis of existing data, alongside the notable deep-water discoveries and findings in Namibia and São Tomé and Príncipe. This would provide a unique opportunity to further derisk the deepwater Ivorian Tano Basin.

Geological setting

The Tano Basin is one of the last segments of the Atlantic Margin to open. The African Transform Margin cuts across the structural pattern observed in other regions of South Atlantic, where rifting typically followed the Pan-African/Brasiliano lineaments. It results in a relatively complex rift topography marked by volcanic intrusions formed during the rifting stage. Exploration-wise this basin is one of the recent prolific hydrocarbon regions discovered in the Gulf of Guinea.



Schematic section through the Tano Basin.

Exploration history

- Gas discoveries in the Upper Cretaceous and oil finds in the Lower Cretaceous mark historic exploration
- 2001-2007: despite political instability, exploration persisted, uncovering offshore oil and gas fields
- 2008-2010: Notable offshore finds in the Tano Basin fuelled optimism about oil and gas potential
- 2010s: Paon and Pelican discoveries affirmed Upper Cretaceous oil potential in deepwater Côte d'Ivoire
- 2021: Baleine marked a world-class discovery and opened a new play
- 2024: Calao discovery in multiple Cenomanian intervals – a discovery is described as the “second largest in the country”

Local contact

Simon Cheesley – Earth Data

Tel: +44 7584 211 920

datalibrary.eame@cgg.com

24FY-ED-1128-V1