

Douala/Kribi-Campo and Rio del Rey Basins

Integrated well and seismic data packages including 6,800 km² of fully-reprocessed 3D PSDM data, over 150 wells and value-added interpretative products to support near-term high-impact exploration opportunities in the available open blocks.

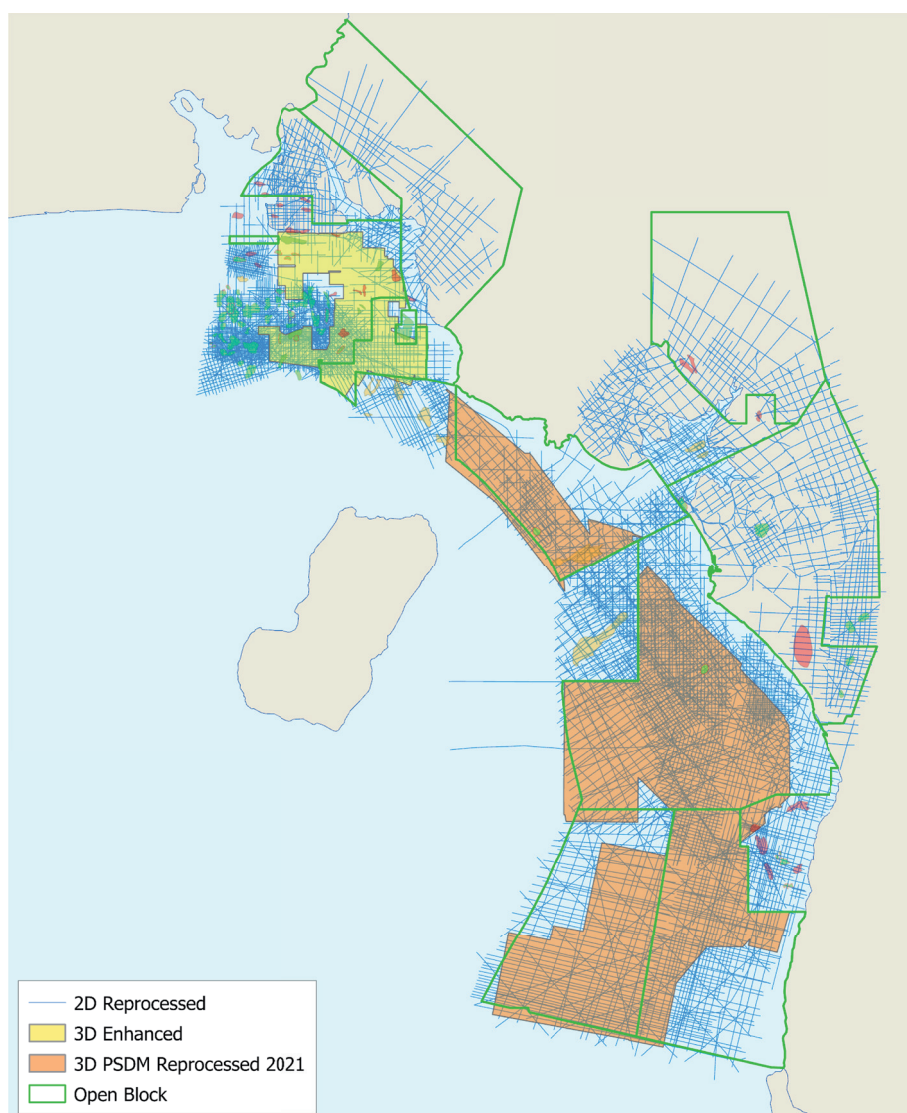
CGG and the Société Nationale Des Hydrocarbures (SNH) are pleased to present integrated well and seismic data packages, available for license.

New and enhanced seismic data:

- 6,800 km² of new PSDM data reprocessed in 2021 from field tapes using the latest technology, including joint 3D source-receiver deghosting, SRME and more
- 10,000 km² of enhanced noise-attenuated 3D data complemented by an extensive zero-phased and time-matched 2D seismic data set
- Geochemical database including legacy wells, seeps and out-crop analysis
- Sedimentological interpretation of key stratal slices
- Prospectivity reviews for each basin

Well data package:

- More than 150 wells available
- Well and seismic montages, reconnaissance petrophysics, well failure analysis, and other value-added products
- Regional seismic interpretation and petroleum synthesis reports



Source: Wood Mackenzie Lens Upstream



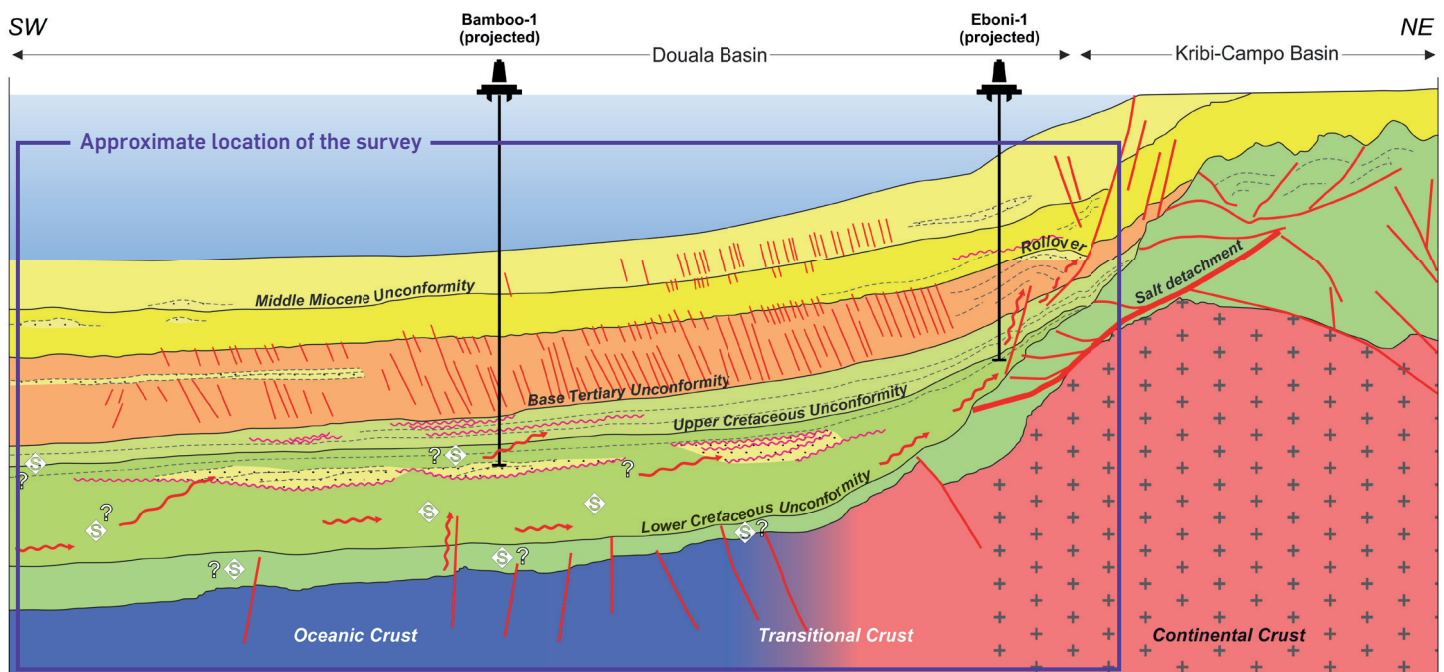
CAMEROON

Insights into prospectivity

Cameroon is a proven hydrocarbon province with production from both the Rio Del Rey and Douala/Kribi-Campo basins. With existing oil and gas infrastructure, both basins present significant opportunities to access near-term high-impact exploration assets with commercial hydrocarbon accumulations in strategic positions. There are large tracts of open acreage available, particularly in the Douala and Kribi-Campo basins.

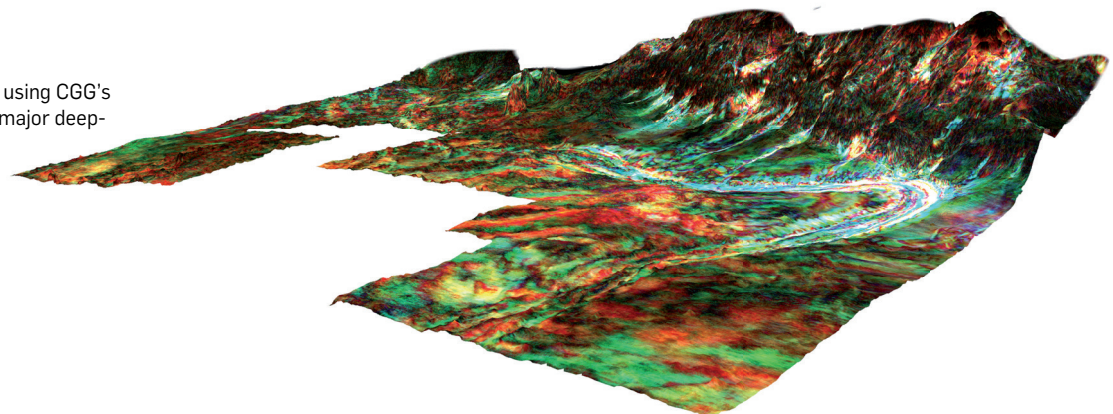
The Douala and Kribi-Campo basins are located to the south of the Cameroon volcanic line at the northern end of the prolific hydrocarbon-producing South Atlantic Rift.

The presence of an active hydrocarbon system has been demonstrated by numerous gas and oil discoveries both onshore and offshore. Structural and stratigraphic traps are proven from Lower Cretaceous through to Upper Tertiary, varying from tilted fault blocks to turbidite channels and fans in deeper water. Recent new petrophysical and geophysical analysis has identified potential missed opportunities from previous exploration, as well as new plays with the potential for large volumes of hydrocarbons to be present across this increasingly prospective basin.



Conceptual play cartoon for Douala and Kribi-Campo basins.

PSDM seismic reprocessed in 2021 using CGG's advanced technologies illuminates major deep-water channel.



Contact us for further details:
datalibrary.eame@cgg.com

cgg.com

SEE THINGS DIFFERENTLY



23FY-ED-436-V1